

Date: 11/12/19

MEMO: Loss of GPS while using SOILMAP Modem

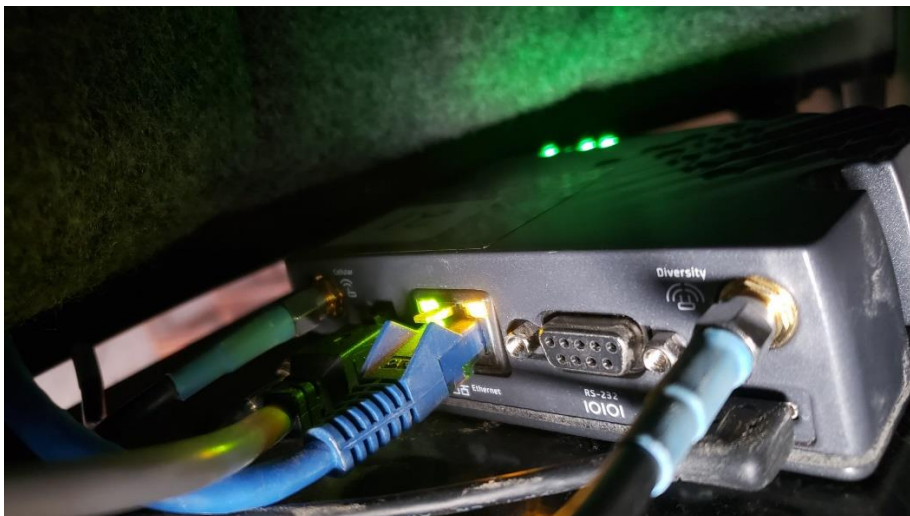
ISSUE: We have some interference problem between the machine's GPS (and autosteer) when using SOILMAP and AgBridge to download files into the machine. After some testing and looking to fix the issue we have found that this can affect all types of systems such as Ag Leader, John Deere, and Raven GPS system too.

If you lose machine GPS in the cab, here is a quick work-around to allow us to continue using the SOILMAP and AgBridge systems in the cab. Ultimately this will help us to still use the file transfer between the machine and office.

- 1) Locate the SOILMAP RV50 modem that looks like the picture below.



- 2) On the backside, you will find two small coax cords that look the same and are labeled 'Cell'. One should be hooked into the "Cellular" port and the other hooked into the "Diversity" port. (See below)



- 3) If the operator is experiencing the 'loss of GPS' issue when the modem is powered up, the user should unhook the 'Cell' coax antenna cable leading to the 'Diversity' port. (See Below)



The system will still operate but it may not keep as strong of a cell signal that talks to the SOILMAP dispatch system. If you are not having issues losing GPS please keep all the cords plugged into the modem.