

Use of Partial Application feature on straight rate applications

Calculate Blend Sheet

1) Select Blender
 Blender: Bode Tower
 Inventory Location: Bode

2) Acres
 GIS
 Over-ride: 39.64
 Partial: 0.00

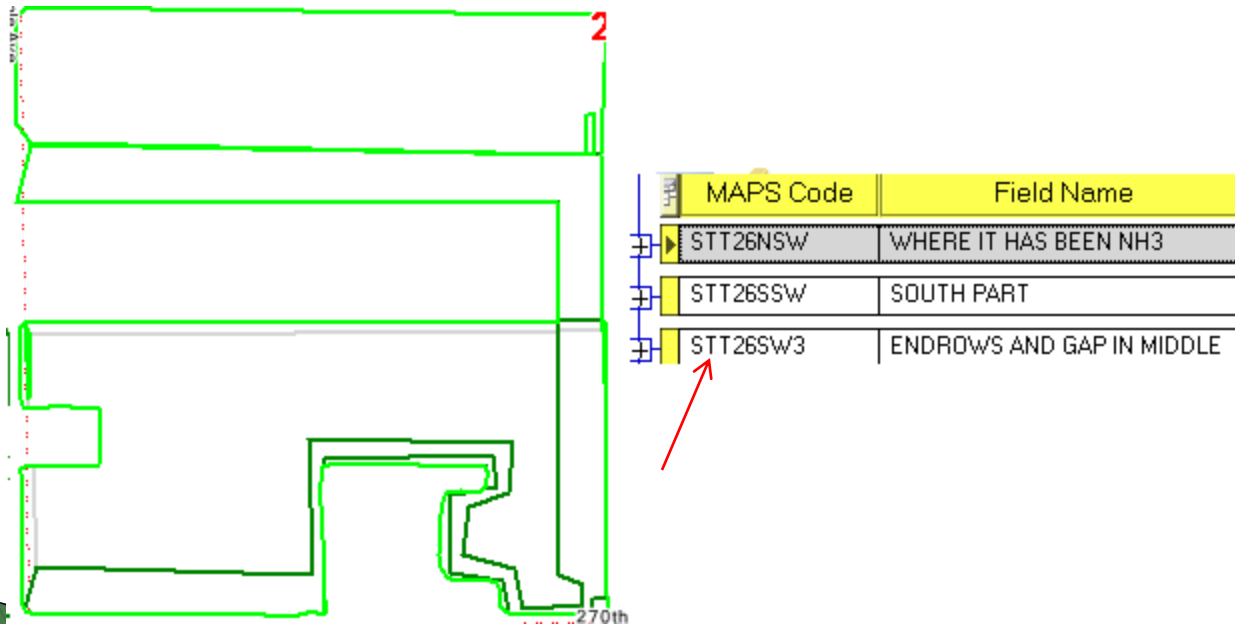
3) Water Rate: 0.000

Blend	Item Number	Item	Creation Date	Crop Year	Rate	rate units	GIS Acres	Product Acr
<input type="checkbox"/>	0080601	GPS FALL APPLICATION	11/25/2011 11:02:06 AM	2012	1	trip	39.64	0
<input type="checkbox"/>	0060170	SULFUR 90% (Bulk or Tote)	11/25/2011 09:43:04 AM	2012	26	lb	39.64	0
<input type="checkbox"/>	0060010	0-0-60 POTASH Bulk Fert	11/25/2011 09:43:04 AM	2012	108.426	lb	39.64	0



Why use Partial Application

- ▶ In this scenario we have 3 fields. The field STT26SW3 was created for an application of UREA, DAP, & Potash for the end rows of this farm.
- ▶ This would be a good example of a place to use the Partial Application feature instead of creating a new field which resulted in causing the multiple boundary lines.



Calculate Blend Sheet

1) Select Blender


Blender

Inventory Location

2) Acres

GIS

Over-ride

Partial 

3) Water Rate

Blend	Item Number	Item	Creation Date	Crop Year	Rate	rate units	GIS Acres	Product Acres	Total
<div style="border: 1px solid black; padding: 10px; width: fit-content; margin: auto;"> <p>Select this button to load Partial Application Screen</p> </div>									

Required amounts

	Total	Per Batch	Per Acre
Pounds	<input type="text"/>	<input type="text"/>	<input type="text"/>
Cubic Feet	<input type="text"/>	<input type="text"/>	<input type="text"/>
Gallons	<input type="text"/>	<input type="text"/>	<input type="text"/>
Minutes	<input type="text"/>	<input type="text"/>	<input type="text"/>
Acres	<input type="text"/>	<input type="text"/>	<input type="text"/>

	N	P	K	S	Zn
Plant Food	<input type="text"/>	<input type="text"/>	<input type="text"/>	<input type="text"/>	<input type="text"/>
Grade	<input type="text"/>	<input type="text"/>	<input type="text"/>	<input type="text"/>	<input type="text"/>

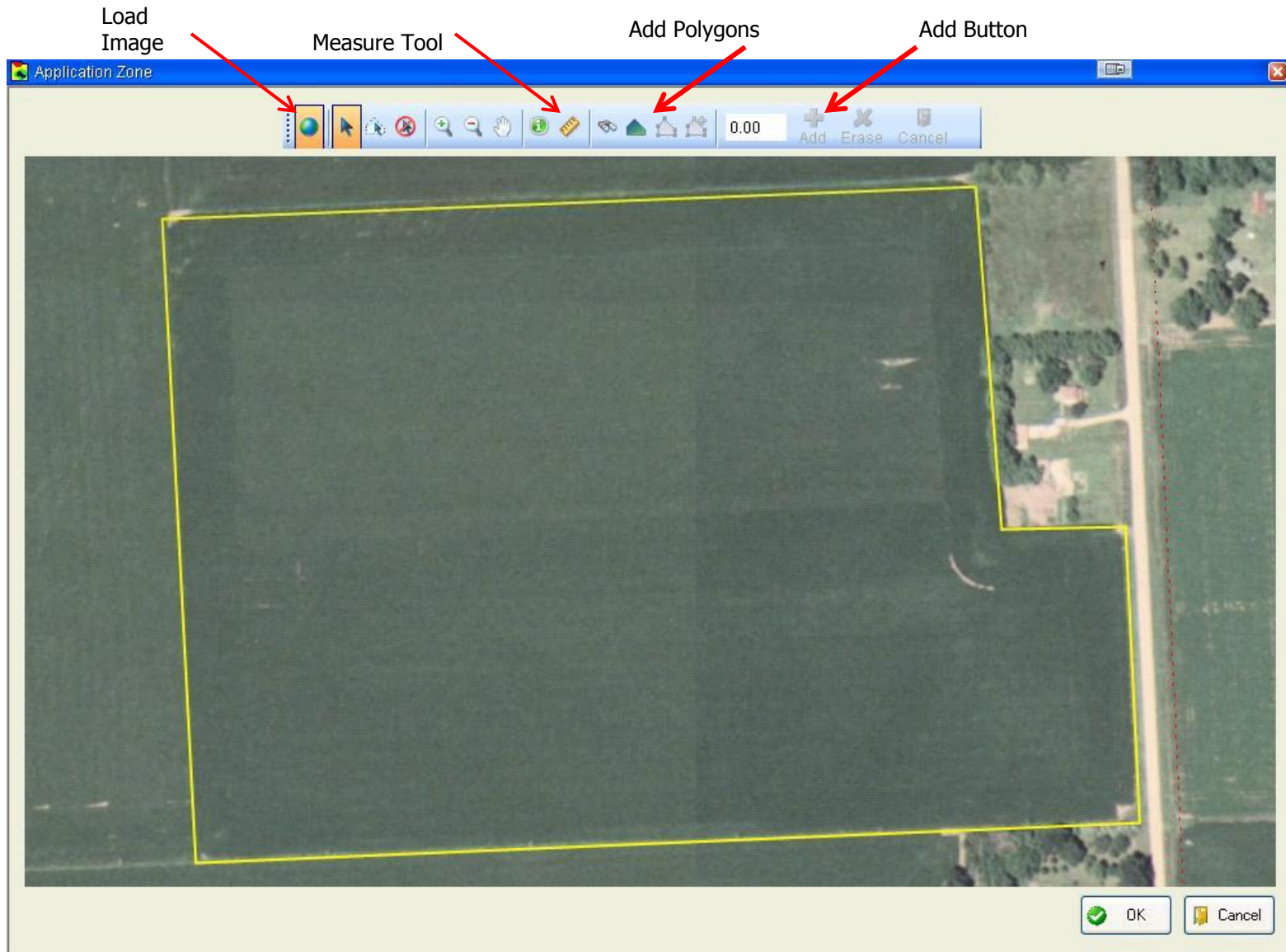
4) Calculate

Choose products to BLEND above, then hit CALCULATE.

Confirm number of batches.

Width of Tender Map in miles.

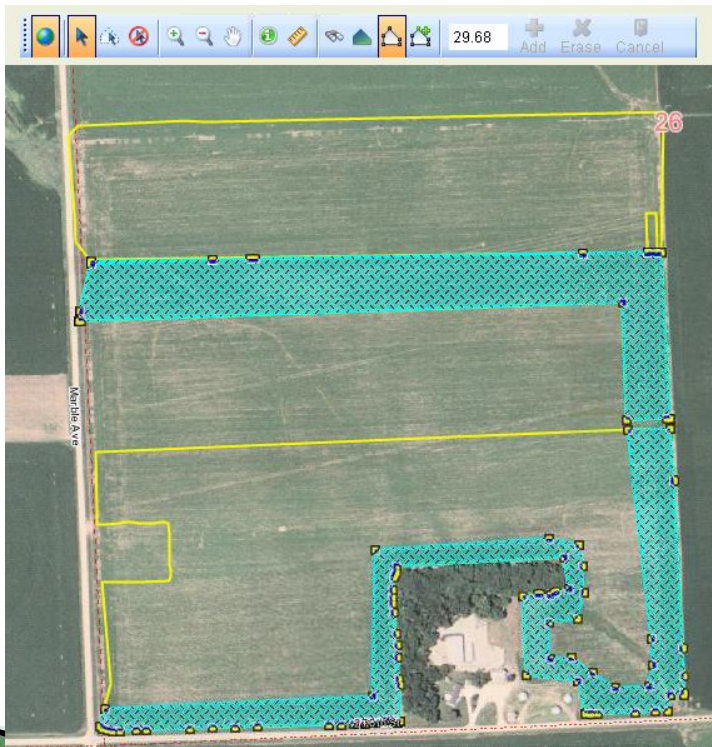
Optional Tender Map Notes



The Add Polygons button is the tool you will be using to mark your application areas. Press the Add button once you have your area drawn

Partial Application

- ▶ With many Growers enrolled in the Grid Loyalty program and Data Management program using this feature will help keep those farms cleaner.



Benefits of Partial Application

No longer need to add a new field each year for partial applications

Field history is maintained

Field Geography is more accurate