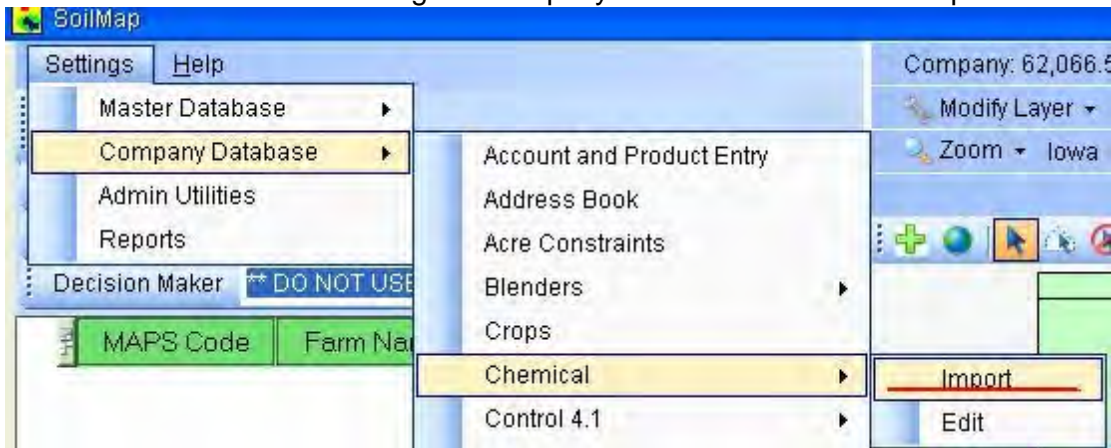


Chemical Linking

Not available to everyone. Permission based.

Overview: SOILMAP maintains a master chemical list. You may have an abbreviation for a chemical so the master database was created to help maintain all the products by a common name. We use exactly what the MSDS and specimen label say when entering these.

To link a chemical to SOILMAP go to Company Database - Chemical - Import



This will load the chemicals for your company (Items in red are not priced in your accounting package)

STEP 1 - Select a chemical item to link.

All chemicals from your accounting package that have not been linked for use in Soilmap.

Will default from A to Z
Click here to switch to Z to A

ItemNumber	Description	UnitOfMeasure	AreaofUnit	Is Priced
0700158	ATRAZINE 4L - AS 2.5 Gal	GAL	ACRE	<input checked="" type="checkbox"/>
0701199	ATRAZINE 4L - AS 110	GAL	ACRE	<input type="checkbox"/>
0700155	ATRAZINE 90 DF - AS	LB	ACRE	<input checked="" type="checkbox"/>
0701252	Authority Assist	GAL	ACRE	<input checked="" type="checkbox"/>
0701	Can also be arranged by item number	LB	ACRE	<input checked="" type="checkbox"/>
07001	N. PHOSPHATE	GAL	ACRE	<input checked="" type="checkbox"/>
0701		LB	ACRE	<input type="checkbox"/>
0701254	AXIOM ACU-BIN 1000#	LB	ACRE	<input type="checkbox"/>
0701256	AXIOM AT 20#	LB	ACRE	<input type="checkbox"/>
0701258	AZTEC 2.1	LB	ACRE	<input checked="" type="checkbox"/>
0701259	AZTEC 4.67 G Smart Box	LB	ACRE	<input checked="" type="checkbox"/>
0701264	BALAN DF 12.5# Jug	LB	ACRE	<input type="checkbox"/>
0701265	BALANCE FLEXX	OZ	ACRE	<input checked="" type="checkbox"/>
0701263	BALANCE PRO 2.5 Gal	OZ	ACRE	<input type="checkbox"/>
0701262	BALANCE PRO 45 oz	OZ	ACRE	<input checked="" type="checkbox"/>
0707520	BANVEL	GAL	ACRE	<input type="checkbox"/>
0701350	BANVEL 2.5 Gal	GAL	ACRE	<input type="checkbox"/>
0701411	BANVEL K + ATRAZINE 110	GAL	ACRE	<input type="checkbox"/>
0701410	BANVEL K + ATRAZINE 2.5	GAL	ACRE	<input type="checkbox"/>
0701440	BARE GROUND 20#	LB	ACRE	<input type="checkbox"/>
0701422	BARRIER 2.5 GL	GAL	ACRE	<input type="checkbox"/>
0701450	BASAGRAN - AS 2.5 GAL	GAL	ACRE	<input type="checkbox"/>
0701520	BASIS	OZ	ACRE	<input checked="" type="checkbox"/>
0701525	BASIS GOLD 1 oz	OZ	ACRE	<input type="checkbox"/>
0701530	BAYTHROID II .5 Gal	GAL	ACRE	<input checked="" type="checkbox"/>
0701531	BAYTHROID XL 4X1 Gal	GAL	ACRE	<input checked="" type="checkbox"/>
0701550	BAYTHROID XL 4X1 Gal	GAL	ACRE	<input type="checkbox"/>

* Items in red are not priced in your accounting package.

STEP 2 - Select matching Soilmap Master Chemical.

Select the Soilmap Master Chemical that exactly represents your accounting item.

Description:

EPA Number:

Dry Liquid

*It is imperative that this is selected correctly. If you do not see the desired product in the list contact MAPS to have it added. Do NOT simply select one that is "Close"

Correct

STEP 3 - Verify

Verify this is the billing unit that you expect from your accounting program.

Description:

Item Number:

Billing Units:

Correct

STEP 4 - Custom setting for this item:

PackageSize:

Comparison Price: Billing Unit

Rounding amount: Billing Unit

Minimum Rate:

Default Rate:

Maximum Rate:

Correct

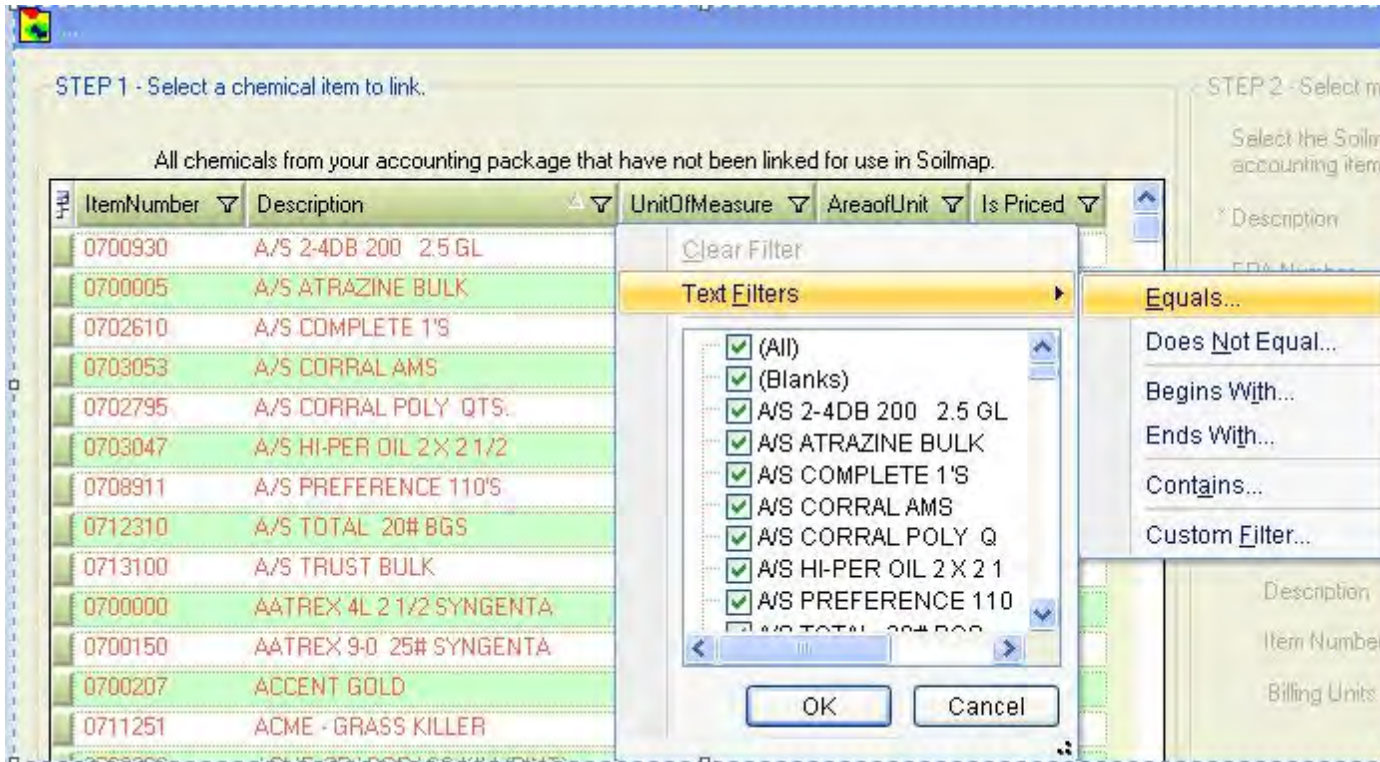
STEP 5 - Finish

LINK Close

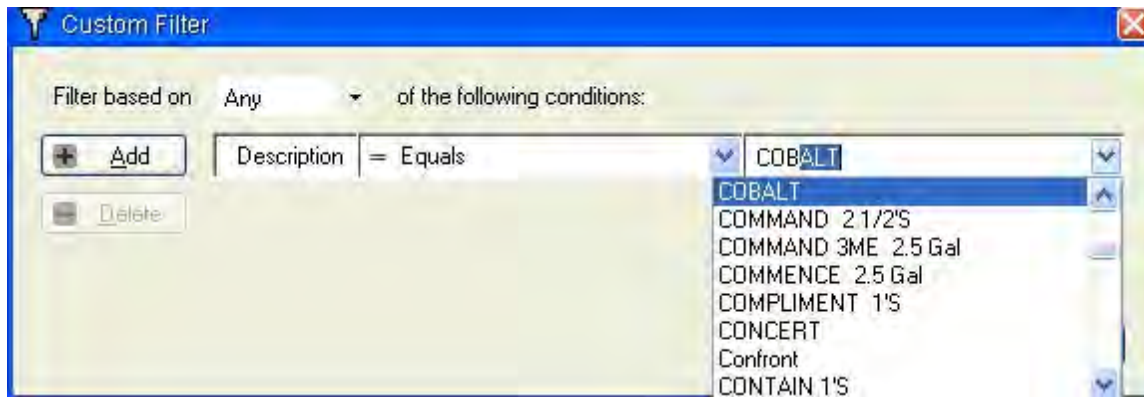
(Advanced Filtering)

For some companies this may be a very large list. To narrow your search we have some advanced filtering tools we can use.

Select the filter button next to Description  Select Text Filers - Equals -



In the 2nd text box type in Cobalt



We now have narrowed our list to Cobalt only.

STEP 1 - Select a chemical item to link:

All chemicals from your accounting package that have not been linked for use in Soilmap.

ItemNumber	Description	UnitOfMeasure	AreaofUnit	Is Priced
0702430	COBALT	GAL	ACRE	<input checked="" type="checkbox"/>

* Items in red are not priced in your accounting package.

STEP 2 - Select matching Soilmap Master Chemical:

Select the Soilmap Master Chemical that exactly represents your accounting item.

Description:

EPA Number:

Dry Liquid

* It is imperative that this is selected correctly. If you do not see the desired product in the list contact MAPS to have it added. Do NOT simply select one that is "Close".

Correct

STEP 3 - Verify:

Verify this is the billing unit that you expect from your accounting program.

Description:

Item Number:

Billing Units:

Correct

STEP 4 - Custom setting for this item:

PackageSize:

Comparison Price: Billing Unit

Rounding amount: Billing Unit

Minimum Rate:

Default Rate:

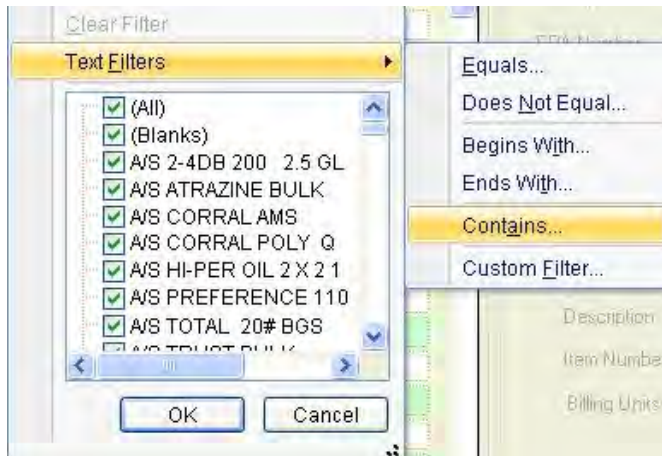
Maximum Rate:

Correct

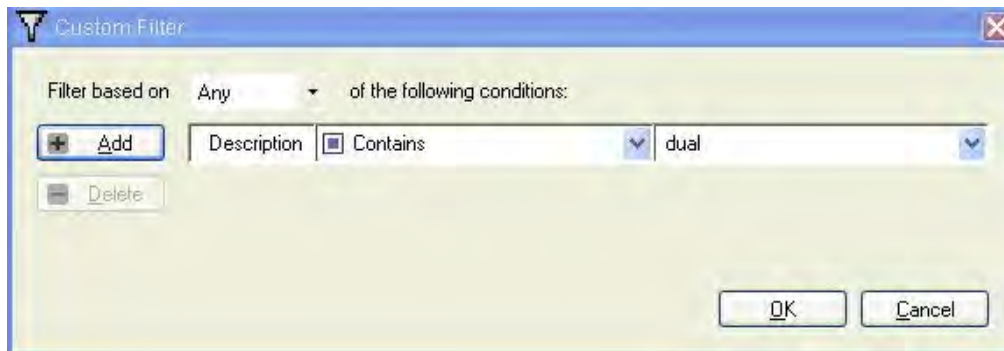
STEP 5 - Finish:

LINK Close

Advanced Filtering using the Contains filter



You may have many different flavors of the chemical Dual. Using the contains filter is an easy way to look at anything that contains Dual.



We now have filtered our chemical list to only display items in accounting that contain the letters dual

STEP 1 - Select a chemical item to link.

All chemicals from your accounting package that have not been linked for use in Soilmap.

ItemNumber	Description	UnitOfMeasure	AreaofUnit	Is Priced
0701805	BROADSTRIKE DUAL	GAL	ACRE	<input type="checkbox"/>
0703864	DUAL II 2 1/2	GAL	ACRE	<input type="checkbox"/>
0703865	DUAL II BULK	GAL	ACRE	<input type="checkbox"/>
0703863	DUAL II MAG PAKS 100 GL.	GAL	ACRE	<input type="checkbox"/>
0703862	DUAL II MAG PAKS 220 GL.	GAL	ACRE	<input type="checkbox"/>
0703820	DUAL II MAGNUM 2.5 Gal	GAL	ACRE	<input checked="" type="checkbox"/>
0703825	DUAL II MAGNUM Bulk	GAL	ACRE	<input checked="" type="checkbox"/>
0703827	DUAL II MAGNUM SI Bulk	GAL	ACRE	<input checked="" type="checkbox"/>
0703868	Dual IIG Magnum	LB	ACRE	<input checked="" type="checkbox"/>
0703867	DUAL IIG MAGNUM Bulk	LB	ACRE	<input checked="" type="checkbox"/>

Step 1. Using Cobalt as an example, we will link this with the SOILMAP master chemical database. Select the item from your accounting package.

STEP 1 - Select a chemical item to link.

All chemicals from your accounting package that have not been linked for use in Soilmap.

ItemNumber	Description	UnitOfMeasure	AreaofUnit	Is Priced
0702217	CIMARRON PLUS 10 oz btl	OZ	ACRE	<input checked="" type="checkbox"/>
0702218	CIMARRON PLUS 2 oz btl	OZ	ACRE	<input checked="" type="checkbox"/>
0702220	CINCH 2.5	GAL	ACRE	<input type="checkbox"/>
0702350	CLARITY 2.5 Gal	GAL	ACRE	<input checked="" type="checkbox"/>
0700940	Class Act NG - AS 2.5 Gal	GAL	ACRE	<input checked="" type="checkbox"/>
0702392	CLASS APM-28 2.5 Gal	GAL	ACRE	<input type="checkbox"/>
0702393	CLASS APM-28 MINI BLK 110	GAL	ACRE	<input type="checkbox"/>
0702394	CLASS COMPLETE 4x1 Gal	GAL	ACRE	<input type="checkbox"/>
0702396	CLASS MCPA 1'S	GAL	ACRE	<input type="checkbox"/>
0702395	CLASS MCPA 2 1/2 GL	GAL	ACRE	<input type="checkbox"/>
0710360	CLASS SB 28 2 1/2 GL	GAL	ACRE	<input type="checkbox"/>
0702400	CLASSIC 6x5 oz	OZ	ACRE	<input type="checkbox"/>
0702355	CLETHODIM 2E	GAL	ACRE	<input checked="" type="checkbox"/>
0702430	COBALT	GAL	ACRE	<input checked="" type="checkbox"/>
0702500	COMMAND 2 1/2'S	GAL	ACRE	<input type="checkbox"/>
0702495	COMMAND 3ME 2.5 Gal	GAL	ACRE	<input type="checkbox"/>
0702550	COMMENCE 2.5 Gal	GAL	ACRE	<input type="checkbox"/>
0702615	COMPLIMENT 1'S	GAL	ACRE	<input type="checkbox"/>
0702620	CONCERT	OZ	ACRE	<input type="checkbox"/>
0702755	Confront	GAL	ACRE	<input type="checkbox"/>
0702758	CONTAIN 1'S	GAL	ACRE	<input type="checkbox"/>
0702765	CONTOUR 2 1/2	GAL	ACRE	<input type="checkbox"/>
0702800	CORNBELT COMBO 2 1/2	GAL	ACRE	<input type="checkbox"/>
0705781	CORNERSTONE - AS 2.5 GAL	GAL	ACRE	<input type="checkbox"/>
0709755	CORNERSTONE - AS 250 GAL	GAL	ACRE	<input type="checkbox"/>
0709756	CORNERSTONE - AS BULK	GAL	ACRE	<input type="checkbox"/>
0705782	Cornerstone 110/250	GAL	ACRE	<input type="checkbox"/>

* Items in red are not priced in your accounting package.

STEP 2 - Select matching Soilmap Master Chemical.

Select the Soilmap Master Chemical that exactly represents your accounting item.

* Description:

EPA Number:

Dry Liquid

* It is imperative that this is selected correctly. If you do not see the desired product in the list contact MAPS to have it added. Do NOT simply select one that is "Close".

STEP 3 - Verify

Verify this is the billing unit that you expect from your accounting program.

Description:

Item Number:

Billing Units:

STEP 4 - Custom setting for this item.

PackageSize:

Comparison Price: Billing Unit

Rounding amount: Billing Unit

Minimum Rate:

Default Rate:

Maximum Rate:

STEP 5 - Finish

Step 2. After selecting a chemical, Step 2 will become available. Select the correct product from the SOILMAP master database and press the Correct button. If you do not see the exact product you are wanting to link, contact MAPS and we will add it.

STEP 2 - Select matching Soilmap Master Chemical

Select the Soilmap Master Chemical that exactly represents your accounting item.

* Description

EPA Number

Dry Liquid

* It is imperative that this is selected correctly. If you do not see the desired product in the list contact MAPS to have it added. Do NOT simply select one that is "Close".

Step 3. Verify the billing units and press correct.

STEP 3 - Verify

Verify this is the billing unit that you expect from your accounting program.

Description

Item Number

Billing Units

Step 4. Here you will be required to fill in the product details. When finished press Correct.

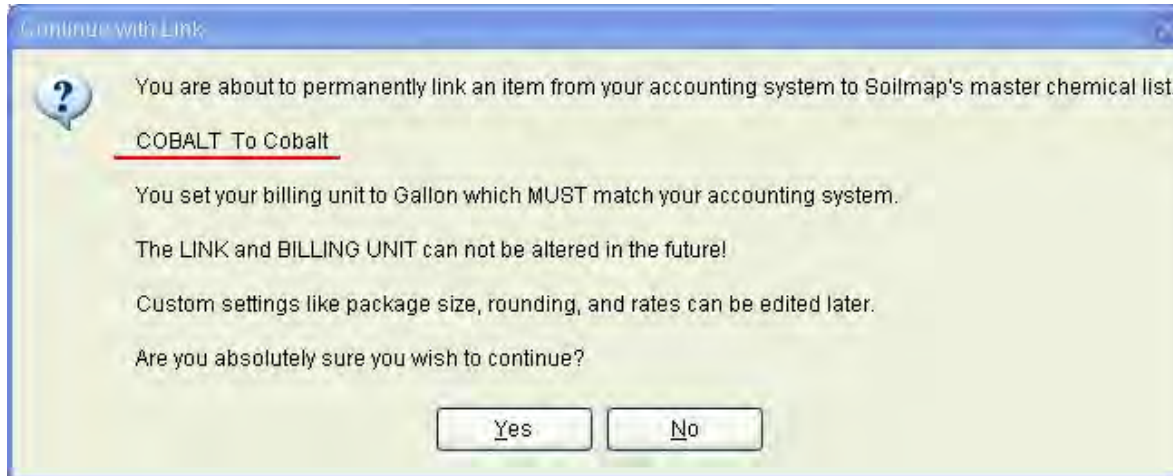
STEP 4 - Custom setting for this item.

PackageSize	<input type="text" value="Gallon"/>	
Comparison Price	<input type="text" value=".1"/>	Gallon
Rounding amount	<input type="text" value="225"/>	Gallon
Minimum Rate	<input type="text" value="3"/>	Fluid Ounce /Acre
Default Rate	<input type="text" value="6"/>	Fluid Ounce /Acre
Maximum Rate	<input type="text" value="9"/>	Fluid Ounce /Acre

Step 5. Press the Link button.

A rectangular button with a thin border and the word "LINK" centered inside.

Once the link button is pressed a continue with link message will appear showing you what is being linked. If settings are correct press Yes.



Product now added to SOILMAP.



You now will have completed the steps to add a product to SOILMAP. For this product to be available for planning you will still need to add to blender and adjust the mix order if necessary.
