

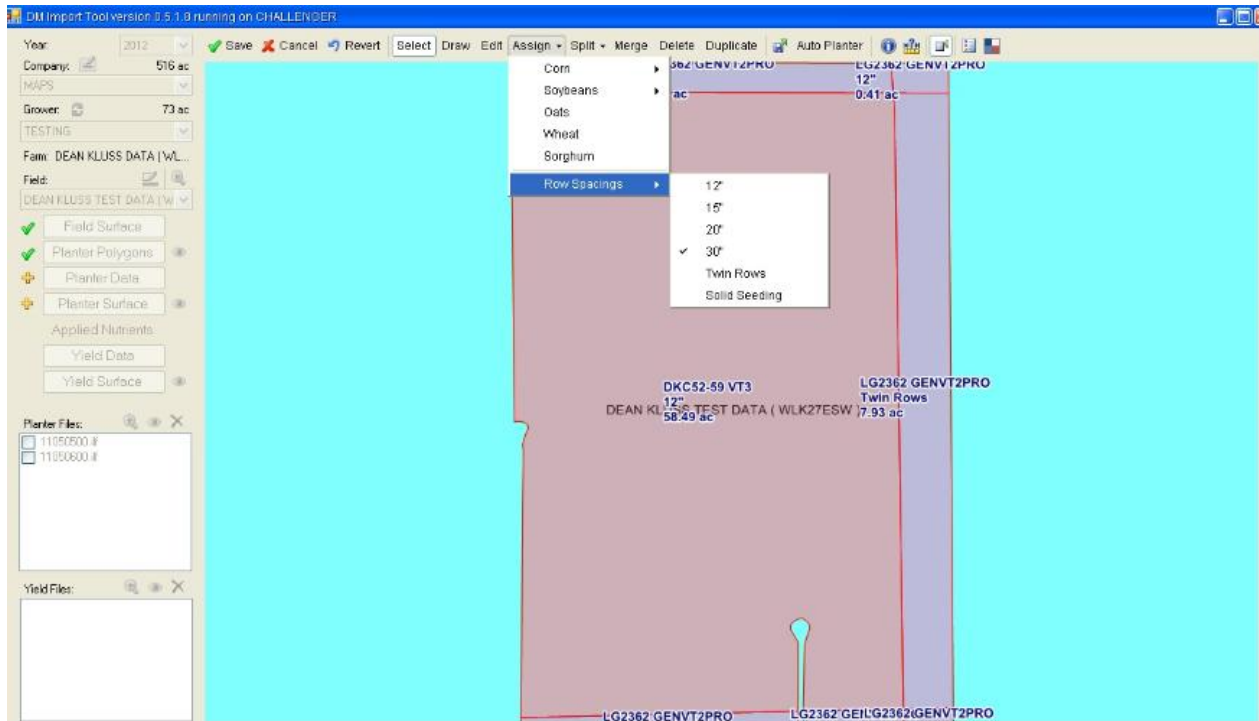
Data Management Program

Version 5.1.8
Row Spacing

Row Spacing Options

- 12"
- 15"
- 20"
- 30" (Default)
- Twin Rows
- Solid Seeding

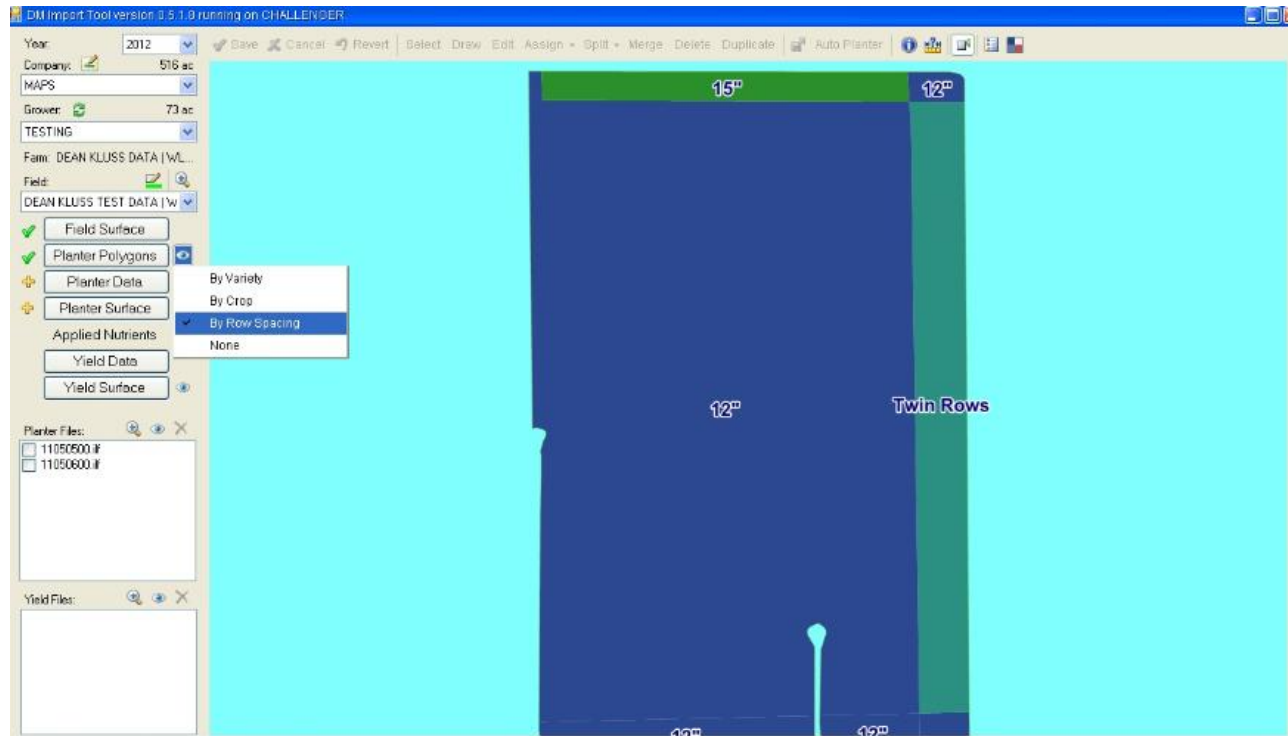
Row Spacing



In Planter Polygon creation mode when setting the crop, 30" row spacing will be the default.

If you need to change that Select Assign – Row Spacings – Space Size and then click on your polygons.

Row Spacing



By selecting the eye next to Planter Polygons and By Row Spacing you can view your Row Spacing Settings.