

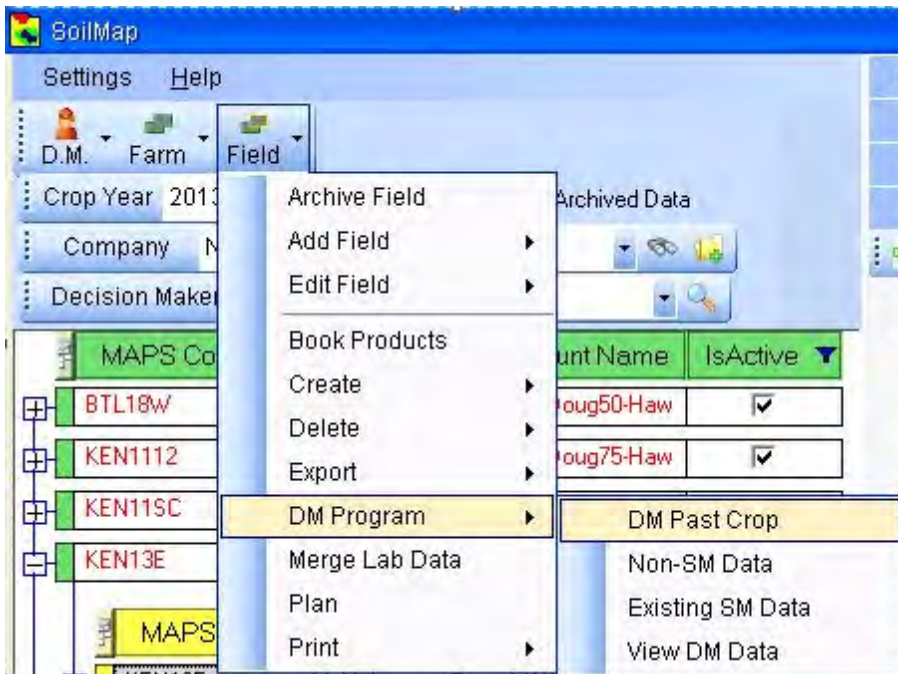
Setting Previous Crop for DM Program

Available to customers who are in the MAPS DM program.

The first year a field is in the Data Management Program this will need to be set. With the 2nd year of enrollment the previous year's crop will be known.

How to:

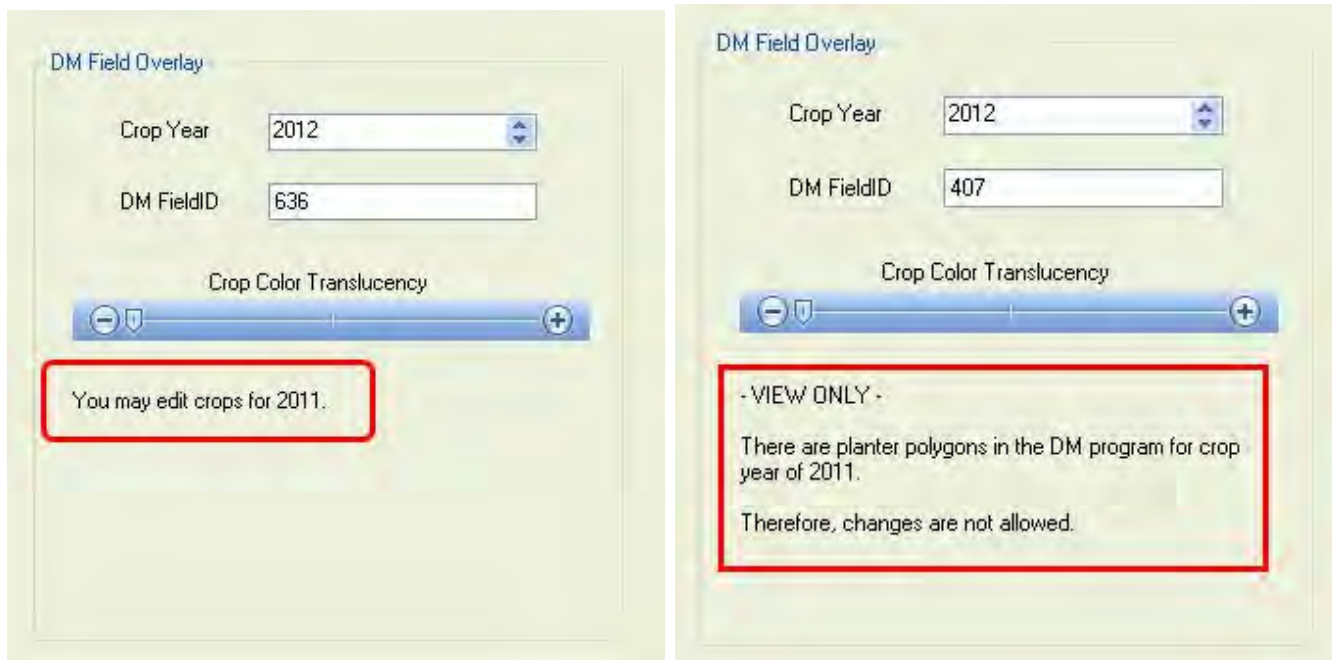
Field level - DM Program - DM Past Crop



There are 2 modes for DM Past Crop

Edit Mode - Field was not enrolled last year and past crop *has to* be set for reports.

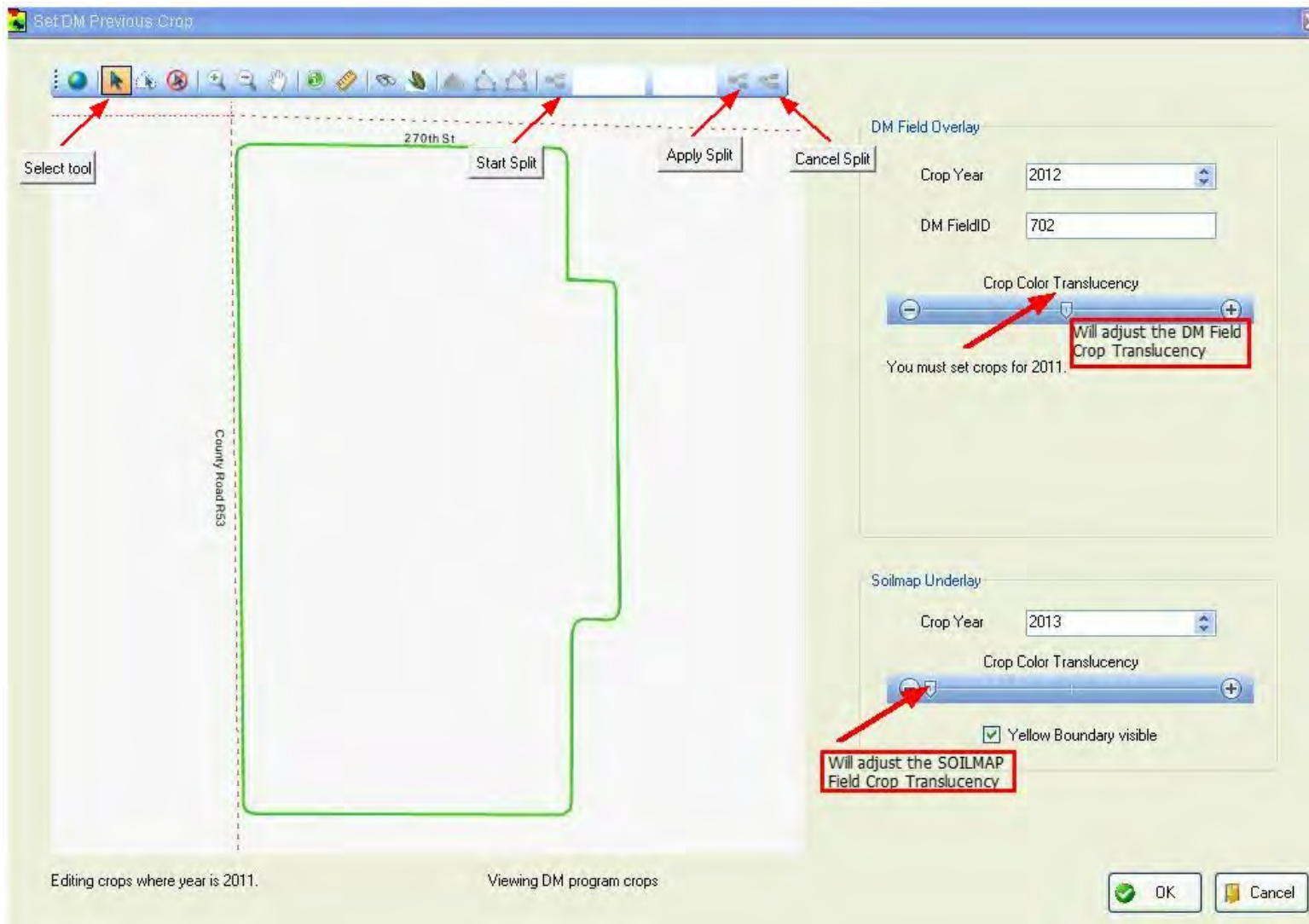
View Only - Field was enrolled last year and past crop *has been* set. Nothing more is needed. *There is a time delay for information to populate*



Edit Mode

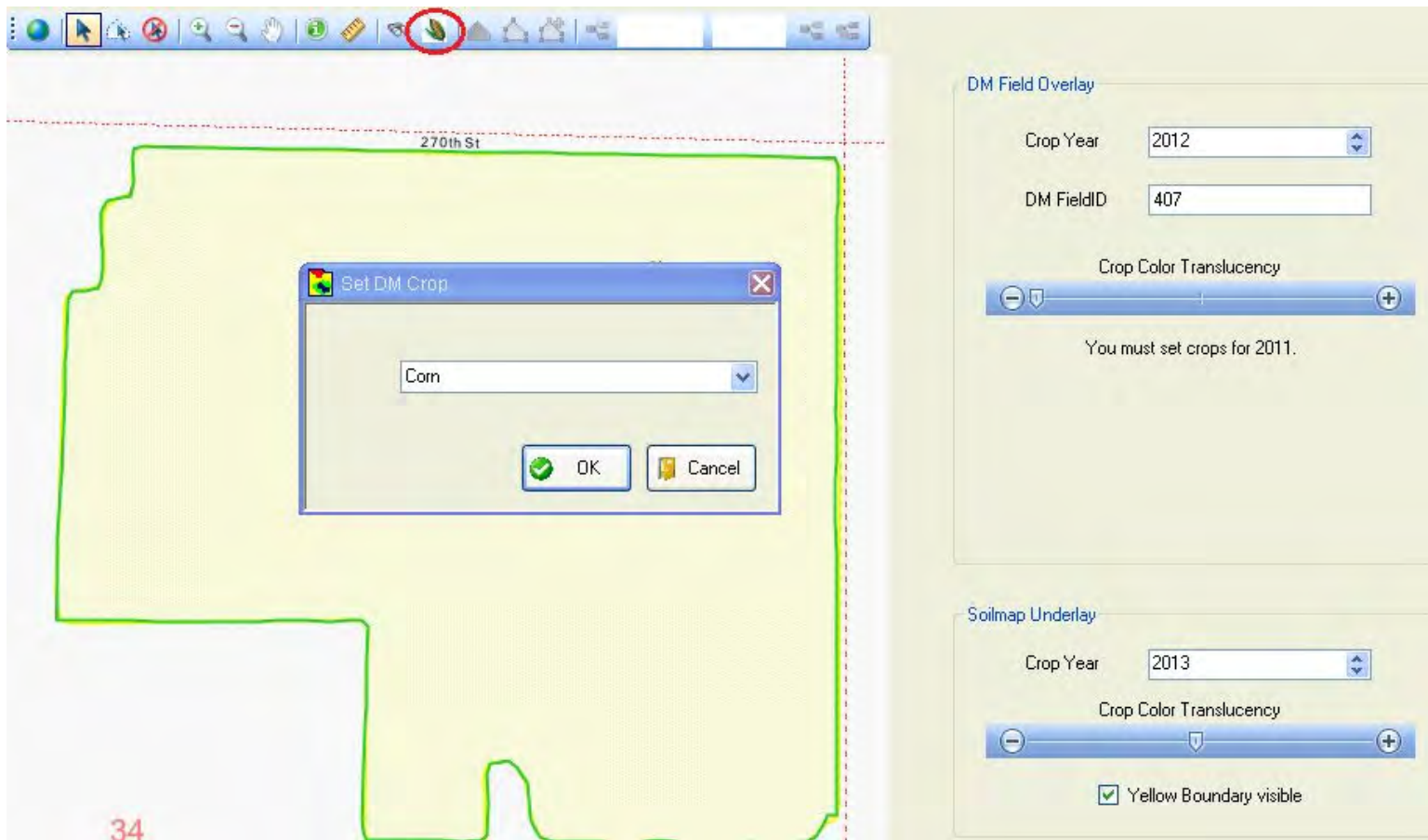
Make sure you are working in the correct year. The example field for this tutorial is enrolled for 2012.

Note - You must use the Select Tool and then click in the field to start edit mode



If splits are needed to differentiate the crop that functionality is included. [See split crop under functional overview in help & manual.](#)

To set the crop, select the crop icon from the toolbar, left click in the polygon to be set and select the crop, press OK button to confirm and OK button again (bottom right corner) to confirm settings.



Past crop for 2011 has been set on this field for DM 2012 enrollment.